

USING ABS-1N AIRBRUSH SYSTEM

Set includes:



Air Grip



Air Hose



Air Adaptor



Air Can 180



Air Can Holder

1. Remove the cap from the Air Adaptor and screw the Air Adaptor into the base of the Air Grip.

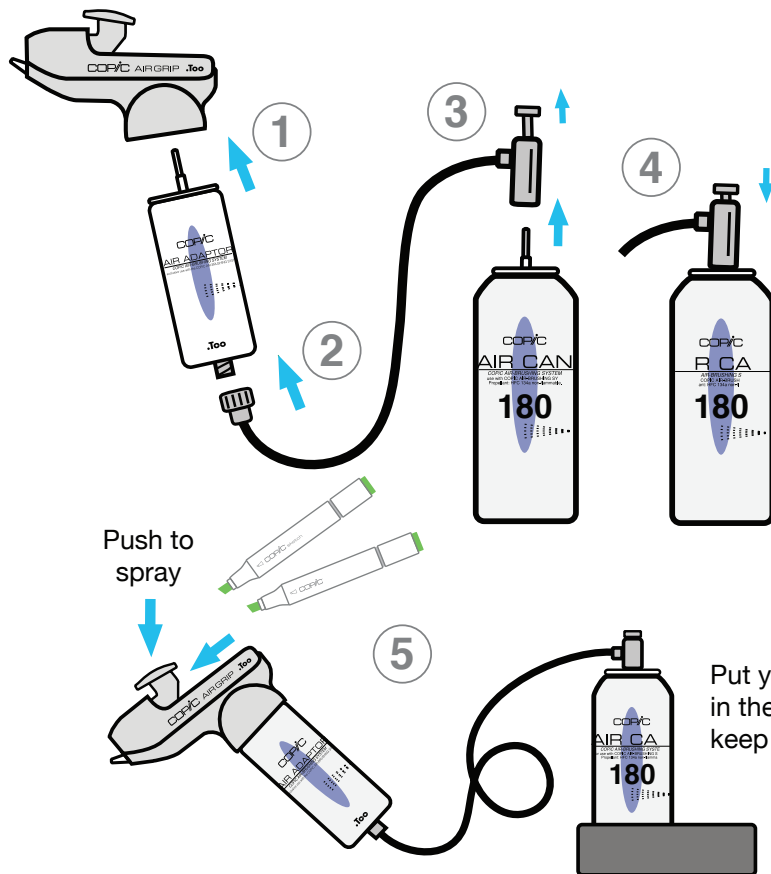
2. Attach the Air Hose to the base of the Air Adaptor.

3. Unscrew the top valve most of the way out. Attach the Air Can nozzle to the hose.

4. Screw the valve back in to activate the Air Can.

Note: When you are done using the Air Can, unscrew the top valve on the air hose before removing from the Air Can.

5. Insert your favorite Copic Classic or Sketch marker into the Air Grip as shown, with the broad nib pointing up, then press the finger pad to spray.



COPIC Airbrush System Warning



- Use in an area with good air circulation.
- Copic markers are alcohol based. Keep away from open flame.
- Do not spray on people or animals.
- Air Cans are under pressure. Do not puncture.

For questions or comments contact us at Imagination International, Inc.
Copic Markers (541) 684-0013, or at copicmarker.com
Copyright © 2014 Imagination International, Inc. All Rights Reserved

.Too Copic is a registered trademark of Too Corporation, Japan. All rights reserved.

COPIC®

USING ABS-2 AIRBRUSH SYSTEM

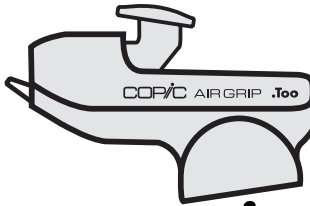
Set includes:



Air Grip



Air Can D-60

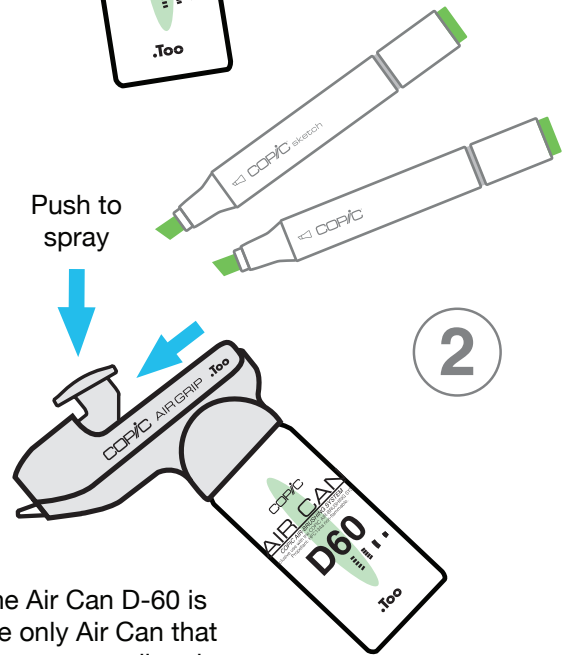


1

1. Remove the cap from the Air Can D-60 and screw the Air Can into the base of the Air Grip.

2. Insert your favorite Copic Classic or Sketch marker into the Air Grip as shown, with the broad nib pointing up, then press the finger pad to spray.

Push to spray



2

The Air Can D-60 is the only Air Can that can connect directly to the Air Grip

COPIC Airbrush System Warning



- Use in an area with good air circulation.
- Copic markers are alcohol based. Keep away from open flame.
- Do not spray on people or animals.
- Air Cans are under pressure. Do not puncture.

For questions or comments contact us at Imagination International, Inc. Copic Markers (541) 684-0013, or at copicmarker.com
Copyright © 2014 Imagination International, Inc. All Rights Reserved

.Too Copic is a registered trademark of Too Corporation, Japan. All rights reserved.

COPIC®

USING ABS-3 AIRBRUSH SYSTEM

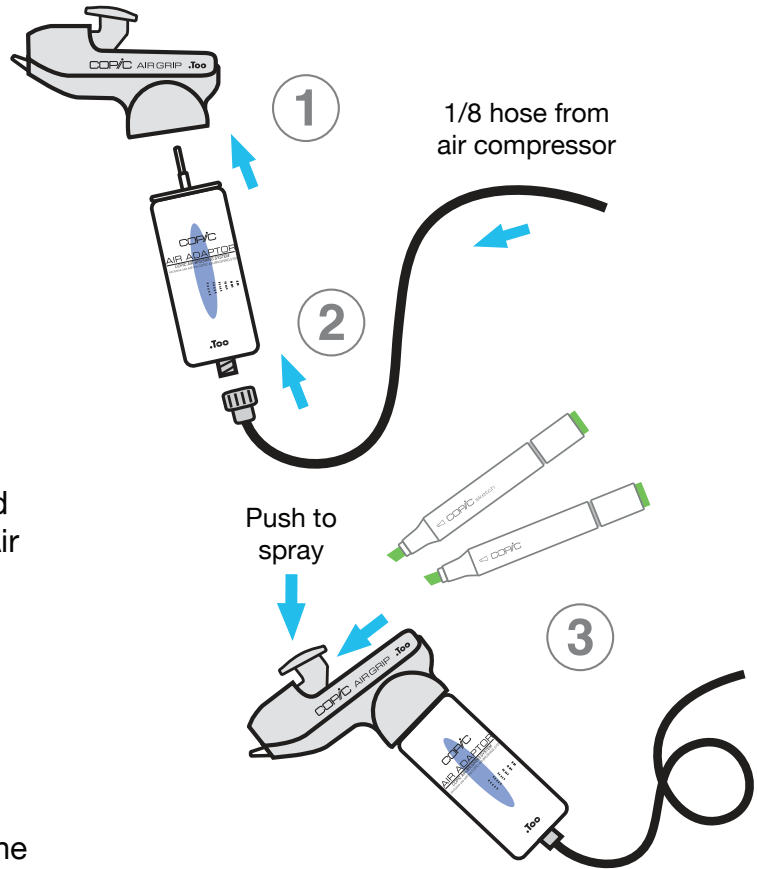
Set Includes:



Air Grip



Air Adaptor



1. Remove the cap from the Air Adaptor and screw the Air Adaptor into the base of the Air Grip.

2. Attach the Air Hose to the base of the Air Adaptor.

3. Insert your favorite Copic Classic or Sketch marker into the Air Grip as shown, with the broad nib pointing up, then press the finger pad trigger to spray.

Copic carries the Sparmax Mini Air Compressor - an oil-less compressor with water trap and pressure gauge. Approximate weight: 8lbs. Included is an air hose of the correct size.

You can order the Sparmax Mini Air Compressor from Copic or connect the air hose to your own hose. If the hose you own is not compatible, you can order an air hose from Copic.



Sparmax Air Compressor with ABS-3 airbrush attachment

COPIC Airbrush System Warning



- Use in an area with good air circulation.
- Copic markers are alcohol based. Keep away from open flame.
- Do not spray on people or animals.

For questions or comments contact us at Imagination International, Inc. Copic Markers (541) 684-0013, or at copicmarker.com
Copyright © 2014 Imagination International, Inc. All Rights Reserved

.Too Copic is a registered trademark of Too Corporation, Japan. All rights reserved.

COPIC®